

6. PLANSEE SEMINAR

bonding treatment. This interface is not well characterized but does possess at least one hard constituent causing it to be somewhat brittle in nature. Improved properties would be expected if the diffusion zone were more narrow.

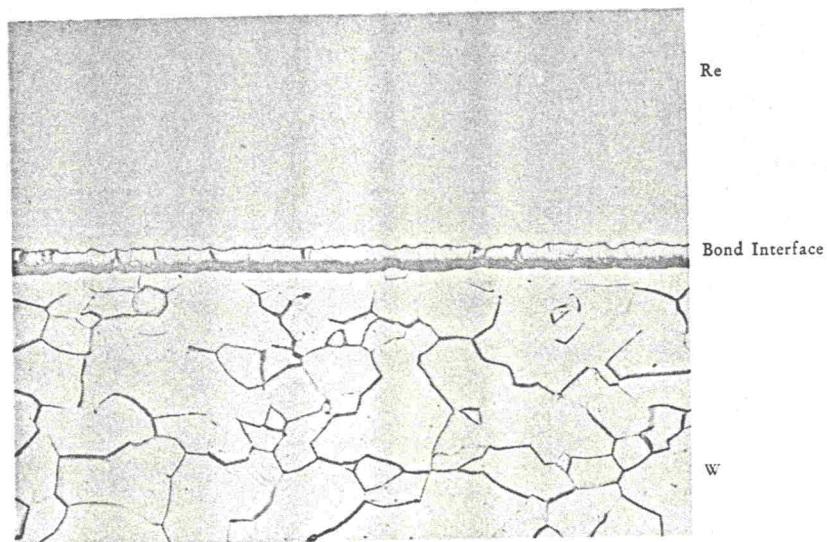


Fig. 13. Bond between rhenium and tungsten. $\times 250$.

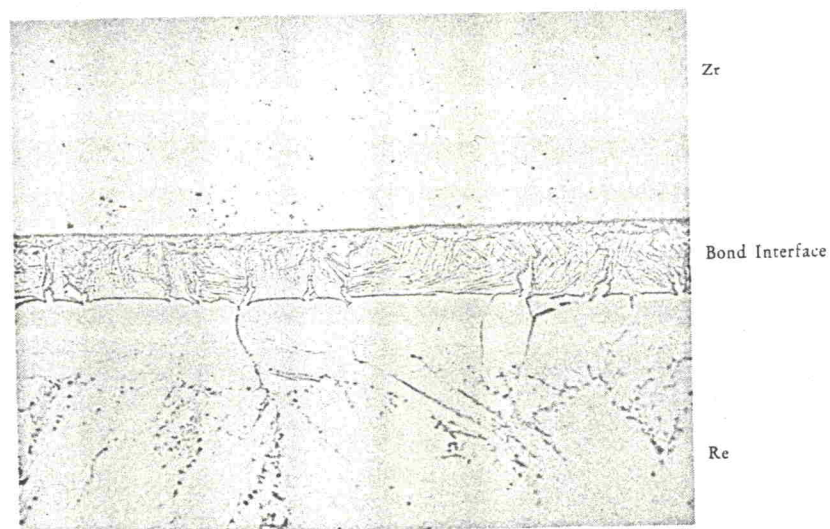


Fig. 14. Bond between rhenium and zirconium. $\times 250$.